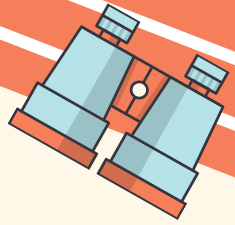


# 2020-21 INITIAL SPECIAL EDUCATOR PLN



**OCTOBER 15, 2020 | 3:30 - 5:00PM (VIRTUAL)**

**DECEMBER 10, 2020 | 3:30 - 5:00PM (VIRTUAL)**

**\*ZOOM LINK FOR OCTOBER AND DECEMBER DATE FORTHCOMING**

**FEBRUARY 25, 2021 | 4:30 - 7:00PM (FACE-TO-FACE)**

**APRIL 22, 2021 | 4:30 - 7:00PM (FACE-TO-FACE)**

**\*FEBRUARY AND APRIL DATE LOCATIONS/TIMES SUBJECT TO CHANGE**

This series focuses on supporting and developing professional knowledge and skills for special education teachers in their first three years of teaching. Educators who participate will engage in learning and practice with relevant topics for special education:

- Facilitation of IEP meetings
- CCR IEPs
- Use of data for student growth and goal setting
- Strategies/best practice in supporting behaviors
- Management of paraprofessionals

Additional topics will be added and discussed through ongoing needs assessment from participants. The series is intended to provide additional and customized support for special education teachers experiencing growth, change and questions unique to the first three years of practice. All PK-12 special educators welcome.

## **REGISTER HERE**

**OR VISIT [WWW.MYQUICKREG.COM](http://WWW.MYQUICKREG.COM)**

**ONLY \$150.00 for SEIS Member Districts!**

(\$200.00 standard registration fee)

EVENT HELD AT CESA #4  
923 E. GARLAND ST. WEST SALEM, WI 54669

QUESTIONS? CONTACT ERIN HANSEN  
EHANSEN@CESA4.ORG/608-786-4845

