

This 6-part series will connect you with national coaching experts. Join us to learn powerful practices and acquire new coaching techniques. Participants will work in teams to hone the necessary skills to effectively apply the day's learning by networking with other professionals. Our plan is to leverage teacher-leader passions and expertise by learning and growing within a professional learning community framework. *We are excited for you to join us!*

Discipline Cohorts and your CESA 6 Partners:

Autism / Program Support Specialists: Lisa Lesselyong • **Special Education Leaders:** Jenny Larson
Math Coaches: Lori Rugotska • **Secondary Literacy Coaches:** Kathy Schmitt



Paula Kluth is a consultant, an advocate and author. She works with teachers and families to provide inclusive opportunities for students with disabilities, and to create responsive and engaging schooling experiences for all learners. A former special educator, Paula was a classroom teacher and inclusion facilitator. Her professional interests include differentiating instruction, active learning, and inclusive schooling. Paula is the author of *Universal Design Daily* (2017), *30 Days to the Co-Taught Classroom* (2016), and *From Text Maps to Memory Caps* (Co-authored with Sheila Danaher, 2014).

OCTOBER 23, 2017: 8:30 A.M. – 12 P.M.

PAULA KLUTH

TEXT MAPS TO MEMORY CAPS: DIFFERENTIATING INSTRUCTION IN K – 12 CLASSROOMS

This idea-filled, interactive workshop is focused on using teacher-created materials to meet the needs of all learners in inclusive schools. Educators will learn ways to engage, motivate, support, and inspire a diverse group of students by creating classroom games, study aids, visuals supports, teaching tools, and review materials. Participants will learn about strategies and adaptations and will have opportunities to try some of them out as well.



Diane Sweeney is a consultant and author. She was a teacher and coach in the Denver Public Schools. After teaching she served as a program officer at the Public Education and Business Coalition (PEBC) in Denver. Diane is the author of *Student-Centered Coaching: The Moves* (2016), *Student-Centered Coaching at the Secondary Level* (2013), *Student-Centered Coaching: A guide for K–8 Coaches and Principals* (2010), and *Learning Along the Way: Professional Development by and for Teachers* (2003). [Click here](#) to see Diane's video, Introduction to Student-Centered Coaching.

NOVEMBER 20, 2017: 8:30 A.M. – 12 P.M.

DIANE SWEENEY

STUDENT CENTERED COACHING

Student-Centered Coaching introduces a new way of delivering instructional coaching that puts students' needs front and center. By focusing on goals for student learning, rather than on fixing teachers, we create partnerships that increase student achievement.

Outcomes:

- Learn how to measure the impact of coaching using the Results-Based Coaching Tool
- Develop strategies for increasing principal and coach partnerships
- Understand how to use coaching cycles to impact student learning



Samantha Bennett is an instructional coach, educational consultant, and author. Building upon years of working shoulder-to-shoulder with teachers, Sam is helping school districts build systems-level coaching and professional development structures to support teachers. Sam's publications include *Imagine it Better: Visions of What Schools Might Be* (2014), *Adolescent Reading Rx: What to Do When Teen Readers Can't or Won't* (Co-authored with Cris Tovani, 2013), *Kids with Grit: Everyday Habits that Grow Readers* (Co-authored with Debbie Miller, 2013), and *That Workshop Book: New Systems and Structures for Classrooms...*(2007).

DECEMBER 19, 2017: 12:00 P.M. – 3:30 P.M.

SAMANTHA BENNETT

WORTHY WORK: WHAT STUDENTS NEED MOST TO ENGAGE AND LEARN

Workshop teaching isn't always a well understood concept. Sam will show systems, structures, routines, and rituals that support successful workshops. Further, Sam will demonstrate how these characteristics can be applied to any content area to gain high levels of student engagement and achievement. Participants will be able to describe the qualities of "work" that make it worthy of students' time and apply long-term and daily planning strategies that will impact student engagement.

HOW TO HELP TEACHERS ARTICULATE THEIR PRACTICE TO IMPACT STUDENT LEARNING

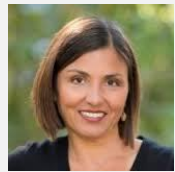
Sam will offer practical ways that coaches can help teachers articulate the research, theory, student data, and professional intuition to support their teaching practices. Participants will learn strategies with which to get feedback FROM teachers so as to design experiences to help them develop and that will expand their Professional Capital.



Sandi Slough is a coaching specialist at the Education Service Center, Region 20 in San Antonio, TX. She works with educators from all levels of expertise, specializing in leadership and instructional coaching. Sandi energetically uses her coaching skills to illuminate possibilities, infuse passion and ignite potential within people. With 25+ years as a professional educator, she uses her campus leadership expertise to coach teams and leaders within a variety of industries. Sandi is a Certified Professional Coach and an Energy Leadership Master Practitioner. Her single driving passion is people.



Cris Tovani taught elementary school for 10 years before becoming a high school reading specialist and English teacher. A nationally known consultant, she chooses to continue teaching high school students full time. She has worked for many years as a staff developer for the Denver-based Public Education and Business Coalition (PEBC), the consortium that has received national acclaim for its work on reading comprehension reform. Cris has authored the books, *I Read It, but I Don't Get It* (2000) and *Do I Really Have To Teach Reading?* (2004). Cris' newest project is called Literacy Labs, a classroom-based PD focused on adolescent engagement in reading, writing and talk.



Elena Aguilar is an author and a trainer on transformational coaching and team development. She has trained thousands of educators across the United States and abroad. Elena is a writer for Edutopia since 2008 and also writes for EdWeek Teacher. Her publications include *The Art of Coaching* (2013) and *The Art of Coaching Teams* (2016). Elena is currently writing a book on cultivating emotional resiliency in educators.

FEBRUARY 19, 2018: 8:30 A.M. – 12 P.M.

SANDI SLOUGH

MAINTAINING MOMENTUM THROUGH MASTERFUL COACHING

Masterful coaches focus on growth and unlocking potential. They use dynamic conversations to unpack thinking and fuel innovative solutions. Instructional leaders and instructional coaches have the added benefit of using observation and feedback to fuel and support growth over time. At times, a coach pushes, at times they pull and at times they simply walk beside the teacher on their growth track. In this session we will explore ideas and techniques that forward sustainable growth and tap into inner motivation for success.

MARCH 8, 2018: 8:30 A.M. – 12 P.M.

CRIS TOVANI

FORMATIVE ASSESSMENT: MONITORING, ASSESSING, AND GRADING STUDENTS' THINKING AND PERFORMANCE

Cris Tovani explores the complex issue of monitoring, assessing, and grading students' thinking and performance with fairness and fidelity. Like all teachers, Cris struggles to balance her student-centered instruction with school system mandates. Her recommendations are realistic and practical; she understands that what isn't manageable isn't sustainable.

APRIL 16, 2018: 8:30 A.M. – 12 P.M.

ELENA AGUILAR

COACHING FOR EMOTIONAL RESILIENCE: FOUNDATIONS, STRATEGIES AND MENTAL MODELS

Elena will lead us on an exploration of how we can coach teachers and leaders to thrive, not just survive, in challenging times and places. Her talk will include highlights and excerpts from Elena's new book, *Onward: Cultivating Emotional Resilience in Educators*-(Jossey-Bass, publication date May 1, 2018).

WHO SHOULD ATTEND?

- Instructional coaches;
- Reading specialists / literacy coaches;
- Teacher leaders;
- Autism specialists;
- Sp.Ed. program support teachers;
- Sp.Ed. teacher leaders;
- Sp.Ed. mentors;
- Principals;
- Curriculum and instruction directors;
- Special education directors; and,
- Any other leaders who support teachers.

FOR ADDITIONAL INFORMATION OR QUESTIONS ABOUT REGISTRATION, CONTACT:

Amy Ruppert, CESA 6 Program Assistant
amy.ruppert@cesa6.org • 920.236.0562

TO REGISTER ONLINE:

Go to: <http://www.cesa6.org/professional-development/calendar.cfm>

- Scroll down the events list to the meeting date

REGISTRATION DETAILS

- **DATES:** OCT. 23, 2017; NOV. 20, 2017; DEC. 19, 2017*; FEB. 19, 2018; MAR. 8, 2018; APR. 16, 2018
- **TIMES:** 8:30 A.M. – 12 P.M.
 (*DEC. 19TH: 12 P.M. – 3:30 P.M.)
- **REGISTRATION FEES*:**
 - \$500 FOR 6 – MEETING SERIES - **OR** -
 - \$100 PER MEETING
- ***SPECIAL EDUCATION PROGRAM SUPPORT TEACHERS: \$100 DISCOUNT FOR THE FIRST 20 SP.ED. PSTs WHO REGISTER & ATTEND THE FULL SERIES.**
- **LOCATION:** CESA 6 CONFERENCE CENTER
 2300 STATE ROAD 44, OSHKOSH
- **REGISTER ONLINE:**
<http://www.cesa6.org/professional-development/calendar.cfm>