

CESA #2 is proud to facilitate an informational teleconference supported by the Medicaid Infrastructure Grant and the Department of Public Instruction.

Wisconsin Youth Panel: Our Employment Stories

Wednesday November 3, 2010
9:00 - 10:00 am Teleconference

Join the teleconference to hear three youth share their triumphs and tribulations on their journey to employment.

The panel will discuss their employment experiences including finding their jobs and accommodations they needed for the position. Youth will also talk about their transition from high school to secondary education, the community, and living on their own. Youth will have advice for professionals and students on how to make a smooth transition.

The teleconference is ideal for:

- classrooms
- youth
- educators
- agencies
- parents
- employers
- Anyone interested in listening to WI youth talk about their employment experiences

To register:

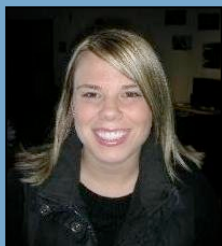
www.myquickreg.com

Free teleconference, no registration fee.

Call-in instructions will be supplied after registering. First-time users will be asked to create an online account. You are not registered until you receive an email confirmation from myquickreg.com. Only myquickreg.com registrations will be accepted.

Registration deadline is *October 25, 2010*

Questions? Contact Pam Jensen,
pamjenson@cesa2.k12.wi.us or 608-921-1400

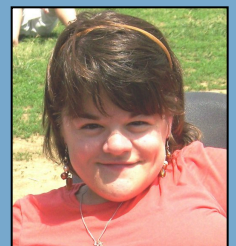


JENNIFER GILLES-BAUER graduated from Waunakee High School. She attended Edgewood College and graduated with a Bachelor of Science degree in Educational Studies. She is currently employed as the Clinical Director at Communication Innovations, a Pediatric Therapy and Educational center in Fitchburg, WI.

SADLER BELL graduated from Vestavia Hills High School in Birmingham, Alabama. He is currently employed in the mail room at the Wisconsin Department of Administration and the Dane County job center.



STEPHANIE BIRMINGHAM graduated from Sturgeon Bay High School and is a graduate of St. Norbert College in De Pere, WI. She



has had some amazing employment experiences working in Maryland as a Public Policy Associate with APSE, a national non-profit organization dedicated to integrated employment of individuals with disabilities.

